

**CERTIFICATE OF ANALYSIS**

Product Name: Muscle Rub 1/2 oz

Manufacturing Date: 11/15/19

Batch Number: 10924M

Batch Size: 106 lb

Quantity Produced: 3402

UPC Code: 692769218620

Lot Number: RA/A/0003

Expiration Date: 11/15/21

Hemp Country of Origin: USA

Manufacturer Country of Origin: USA

All results provided here are tested and verified by an accredited third-party lab.

Ingredient Listing

| INCI Name | Manufacturer | Lot Number |
|---|-------------------|--------------|
| Cera Alba (Beeswax) | Taj Mahal Imports | CN190375 |
| Helianthus Annuus (Sunflower oil) | Taj Mahal Imports | 1922388 |
| Caprylic/Capric Triglyceride (Fractionated Coconut oil) | Taj Mahal Imports | 19GP0144 |
| Menthol (Menthol Crystals) | Taj Mahal Imports | 2018190501 |
| Limnanthes Alba Seed Oil (Meadowfoam Oil) | Taj Mahal Imports | 10333 |
| Arnica Montana (Arnica Oil) | Herbco | 19H231-58 |
| Mentha Piperita (peppermint Oil) | Taj Mahal Imports | 407684 |
| Cinnamomum Camphora (White Camphor Oil) | Taj Mahal Imports | 190423817 |
| Tocopheryl Acetate (Vitamin E Oil) | Taj Mahal Imports | 201201903211 |
| Curcuma Longa (Turmeric Oil) | Taj Mahal Imports | 190325401 |
| Lavendula Angustifolia (Lavender Oil) | Taj Mahal Imports | 147033 |
| Eugenia Caryophyllus (Clove Oil) | Taj Mahal Imports | 190187556 |
| Polarized Cannabidiol (Hemp CBD) | Enveed | 2175 |
| Zingiber Officinal (Ginger Root Oil) | Taj Mahal Imports | 180810325 |

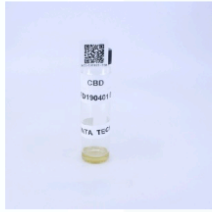
*This product has been tested by a licensed 3rd party testing laboratory and the results have been reviewed by the quality Assurance Department at Quanta and has met all product specifications. Per results outlined in this certificate, this product contains non-detectable amounts (<0.3%) of THC.

CERTIFICATE OF ANALYSIS

* FOR QUALITY ASSURANCE PURPOSES. NOT A CALIFORNIA COMPLIANCE CERTIFICATE.

PRODUCED: JUN 25, 2019

CBD FD190401B (CONCENTRATE) // CLIENT: QUANTA // BATCH RESULT: PASS



MATRIX: CONCENTRATE
CATEGORY: INHALABLE
SAMPLE ID: BCL-190621-058
COLLECTED ON: JUN 21, 2019
RECEIVED ON: JUN 21, 2019
BATCH SIZE: 1 UNITS
SAMPLE SIZE: 1 UNITS

| | |
|---------------------------|----------------|
| CBD | 84.17 % |
| CBDV | 1.05 % |
| TOTAL CANNABINOIDS | 85.22 % |



CANNABINOIDS



RESULTS CERTIFIED BY: RON BROOKS, M.S.

SCIENTIFIC DIRECTOR, BELCOSTA LABS

JUN 25, 2019



| ANALYTE | LABELED AMOUNT | DETECTED | DETECTED | LOD | LOQ | PASS/FAIL |
|--|----------------|------------|---------------|------------|----------|-----------|
| CBC * | | 1.07675 % | 10.7675 mg/g | 0.025 mg/g | 0.1 mg/g | N/A |
| CBCA * | | ND | ND | 0.025 mg/g | 0.1 mg/g | N/A |
| CBD | | 83.44428 % | 834.4428 mg/g | 0.025 mg/g | 0.1 mg/g | N/A |
| CBDA | | ND | ND | 0.025 mg/g | 0.1 mg/g | N/A |
| CBDV * | | ND | ND | 0.025 mg/g | 0.1 mg/g | N/A |
| CBDVA * | | ND | ND | 0.025 mg/g | 0.1 mg/g | N/A |
| CBG | | 0.16783 % | 1.6783 mg/g | 0.025 mg/g | 0.1 mg/g | N/A |
| CBGA * | | ND | ND | 0.025 mg/g | 0.1 mg/g | N/A |
| CBN | | 0.45917 % | 4.5917 mg/g | 0.025 mg/g | 0.1 mg/g | N/A |
| Δ ⁸ -THC * | | ND | ND | 0.025 mg/g | 0.1 mg/g | N/A |
| Δ ⁹ -THC | | ND | ND | 0.025 mg/g | 0.1 mg/g | N/A |
| THCA | | ND | ND | 0.025 mg/g | 0.1 mg/g | N/A |
| THCV * | | ND | ND | 0.025 mg/g | 0.1 mg/g | N/A |
| THCVA * | | ND | ND | 0.025 mg/g | 0.1 mg/g | N/A |
| TOTAL THC <i>(TOTAL THC = (THCA X 0.877) + THC)</i> | | ND | ND | | | N/A |
| TOTAL CBD <i>(TOTAL CBD = (CBDA X 0.877) + CBD)</i> | | 83.44428 % | 834.4428 mg/g | | | N/A |

* BEYOND SCOPE OF ACCREDITATION

* FOR QUALITY ASSURANCE PURPOSES. NOT A CALIFORNIA COMPLIANCE CERTIFICATE.

